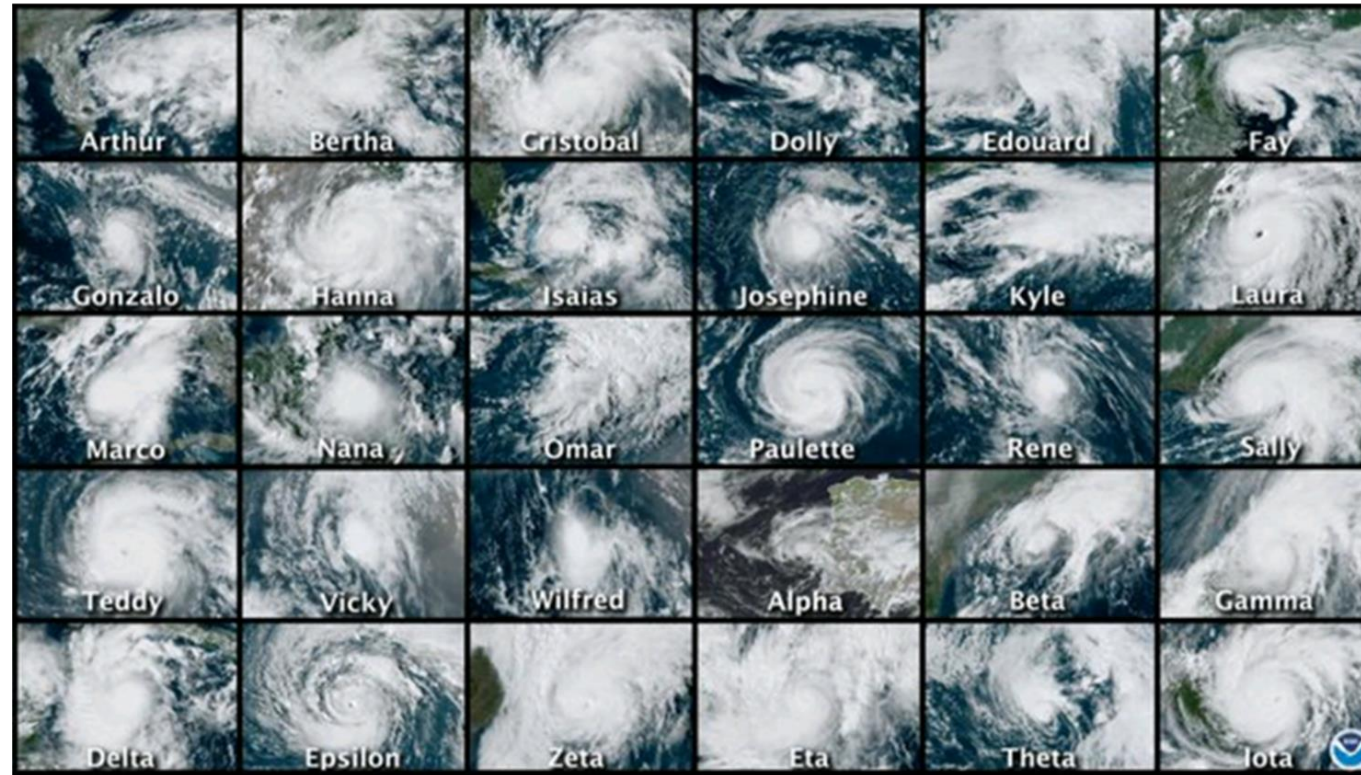




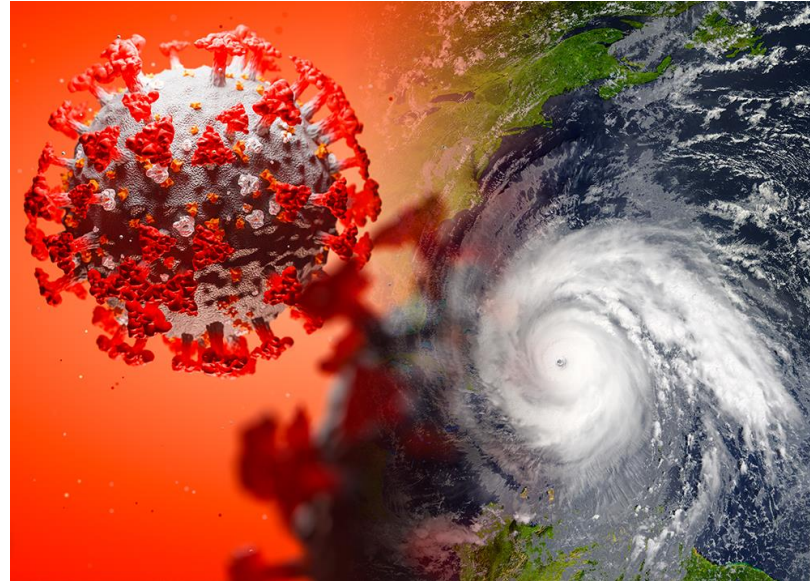
The Regional Approach to Coordination of Multi-Hazards in 2020

Elizabeth Riley
Executive Director – CDEMA

Overview of the 2020 Atlantic Hurricane Season



Multi-Hazard Context

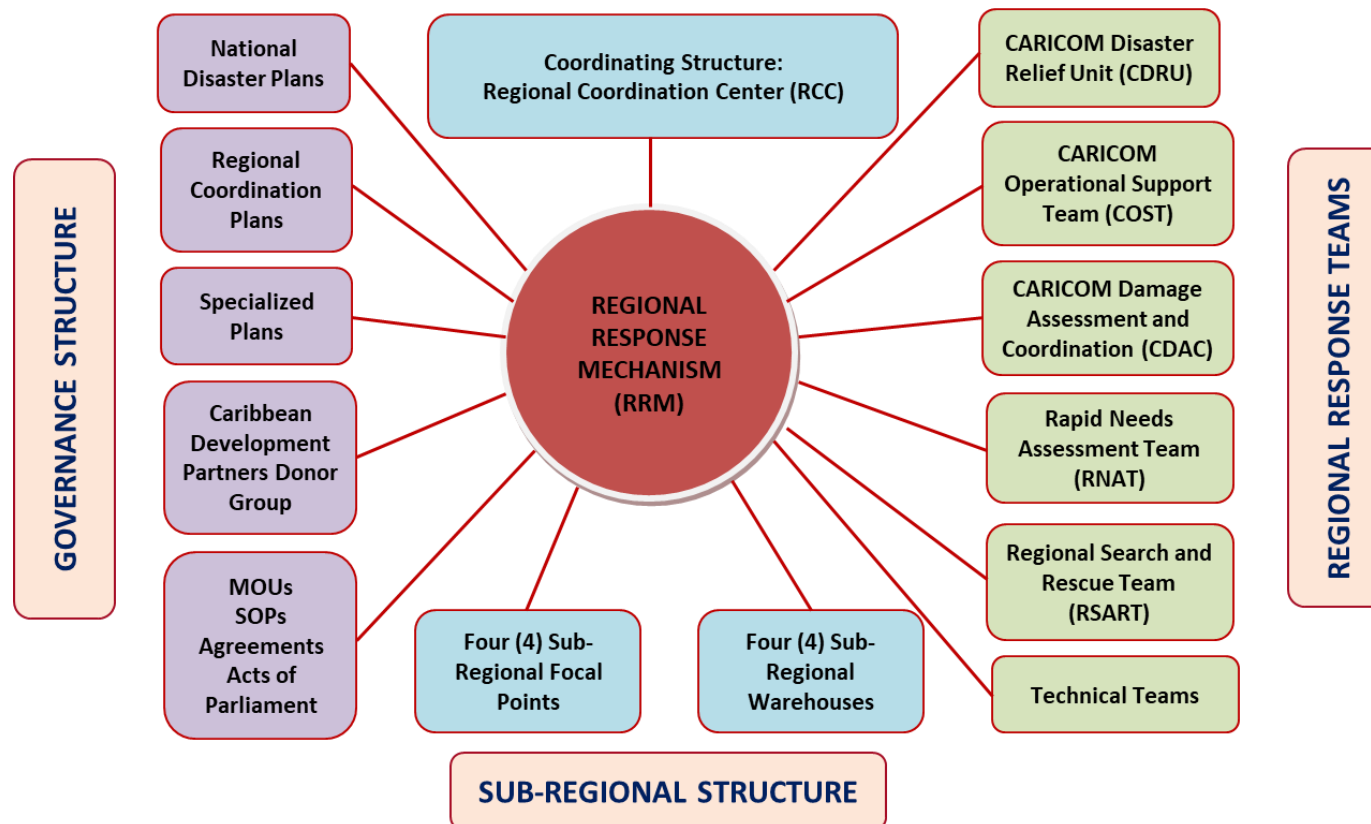


The FSO Nabarima

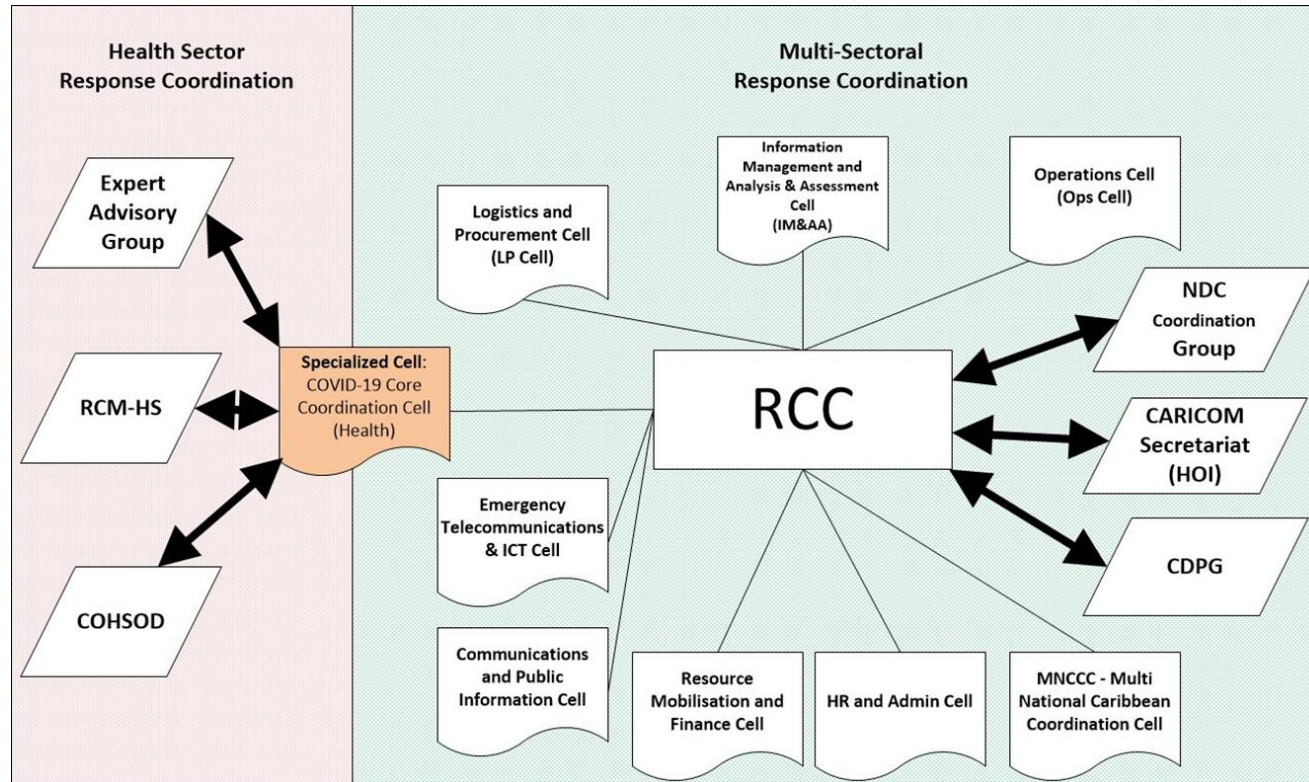


The Effusive Eruption of the La Soufrière Volcano

Leverage Existing Mechanisms: Regional Response Mechanism (RRM)



Appropriate Governance Arrangements: Regional Response Mechanism Multi Sectoral Response Coordination for COVID-19



Partnerships are essential ...



Maximize Opportunities The Integrated Regional Logistics Hub





It's about the people

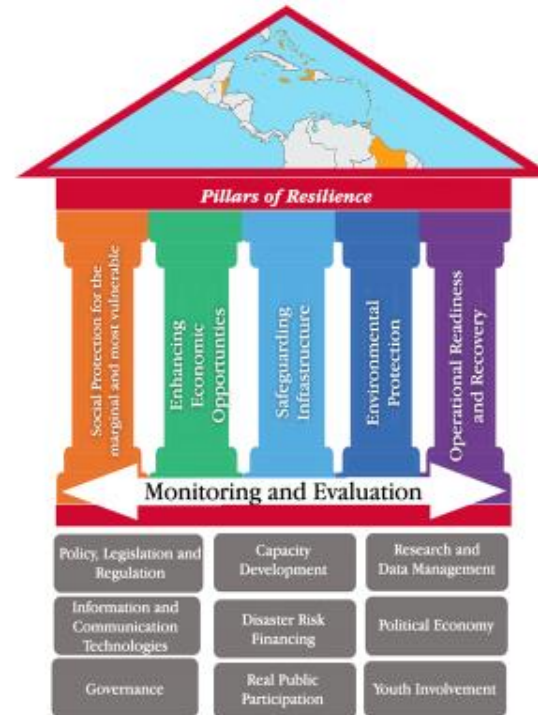
- “COVID-19 has radically altered the socio-economic profile of our region, pushing thousands across the threshold of the marginal into the space of the vulnerable and increasing the demands on our already stretched social protection systems following hazard impacts”
- Factor in human behaviour

Resilience



The Caribbean Resilience Framework (2018)

- ❑ **Pillar 1:** Social Protection for the Marginal and Most Vulnerable
- ❑ **Pillar 2:** Enhancing Economic Opportunity
- ❑ **Pillar 3:** Safeguarding Infrastructure
- ❑ **Pillar 4:** Environmental Protection
- ❑ **Pillar 5:** Operational Readiness and Recovery
- ❑ Nine (9) areas which cover the enabling environment



Moving Forward



Stronger partnerships & coordination

Further update plans – multi-hazard context

Joint simulations, testing and exercises

Questions

